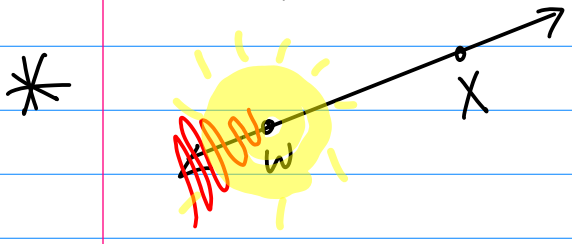
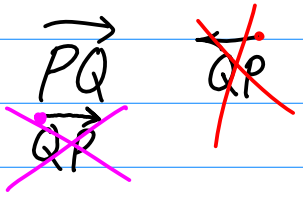
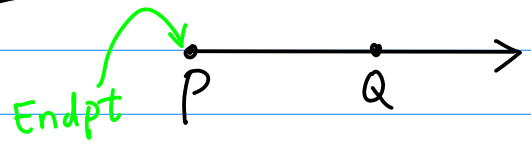


§1.1: Rays

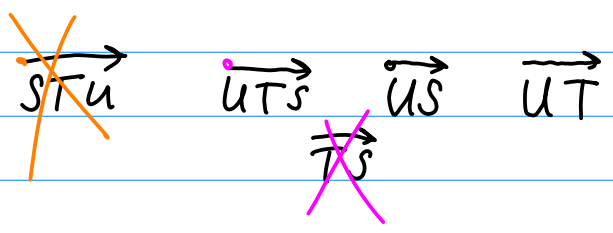
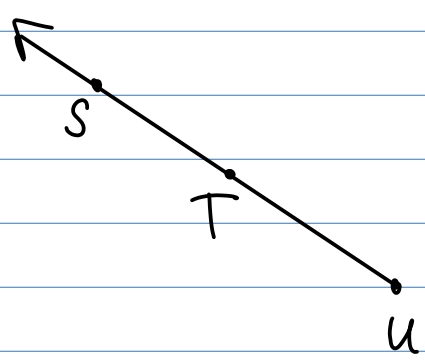


Ray: a line w/ 1 endpoint that continues infinitely in 1 direction

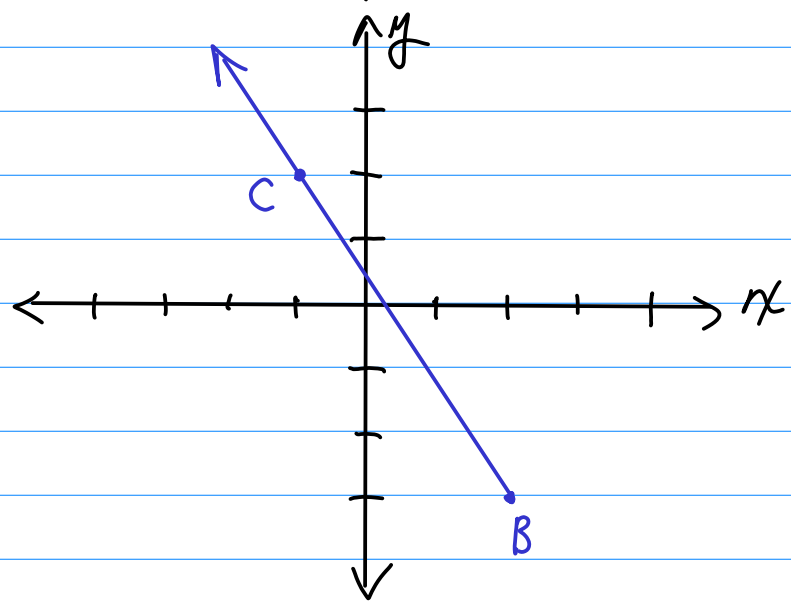
Ex: Name:



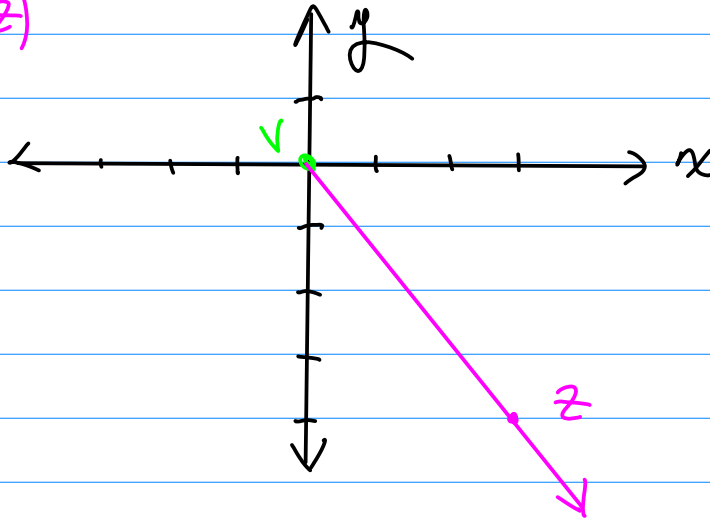
Ex:



Ex: Draw \overrightarrow{BC} where $B(2, -3)$ & $C(-1, 2)$.

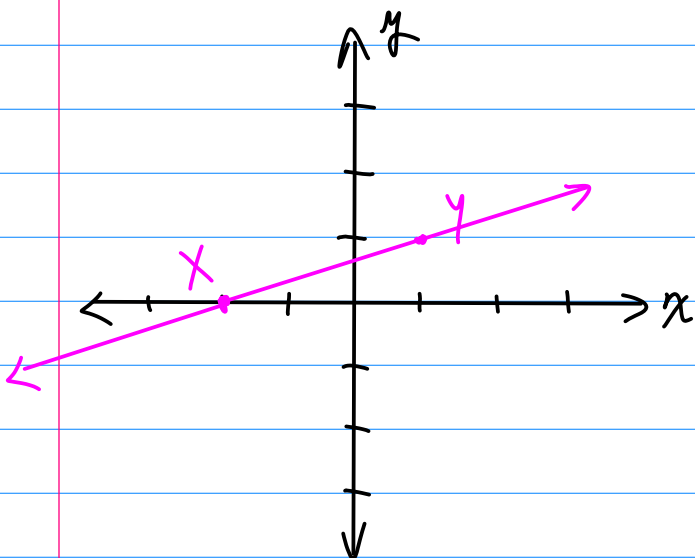


Ex: Draw \vec{VZ} where the endpt is at origin and the other pt. is at $(3, -4)$.



Practice:

1) Draw \overleftrightarrow{XY} where $\begin{cases} X(-2, 0) \\ Y(1, 1) \end{cases}$



2) Draw \overline{KL} where $\begin{cases} K(4, 3) \\ L(4, -1) \end{cases}$

→ where is the midpt of \overline{KL} ? $(4, 1)$

